



MAURIZIO CORRADO

[www.nemetonmagazine.net/blog](http://www.nemetonmagazine.net/blog)



© Pooktree  
Planted 1998



















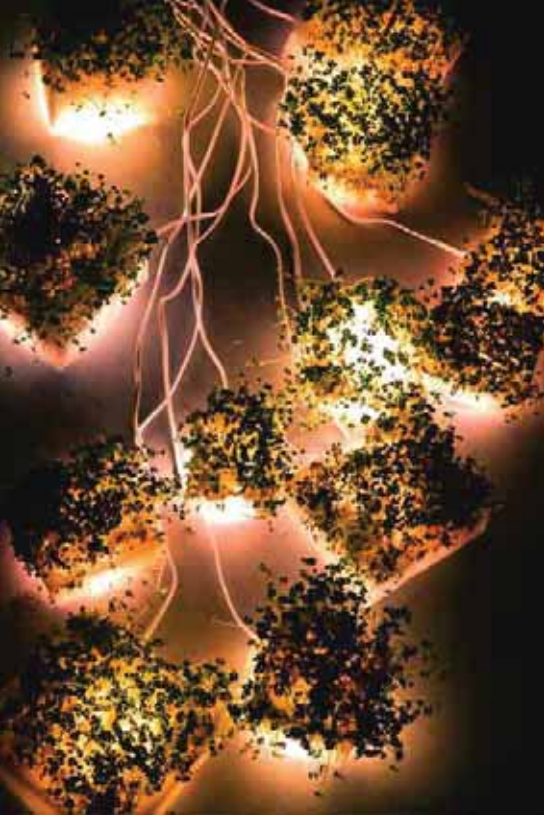














24 x 4









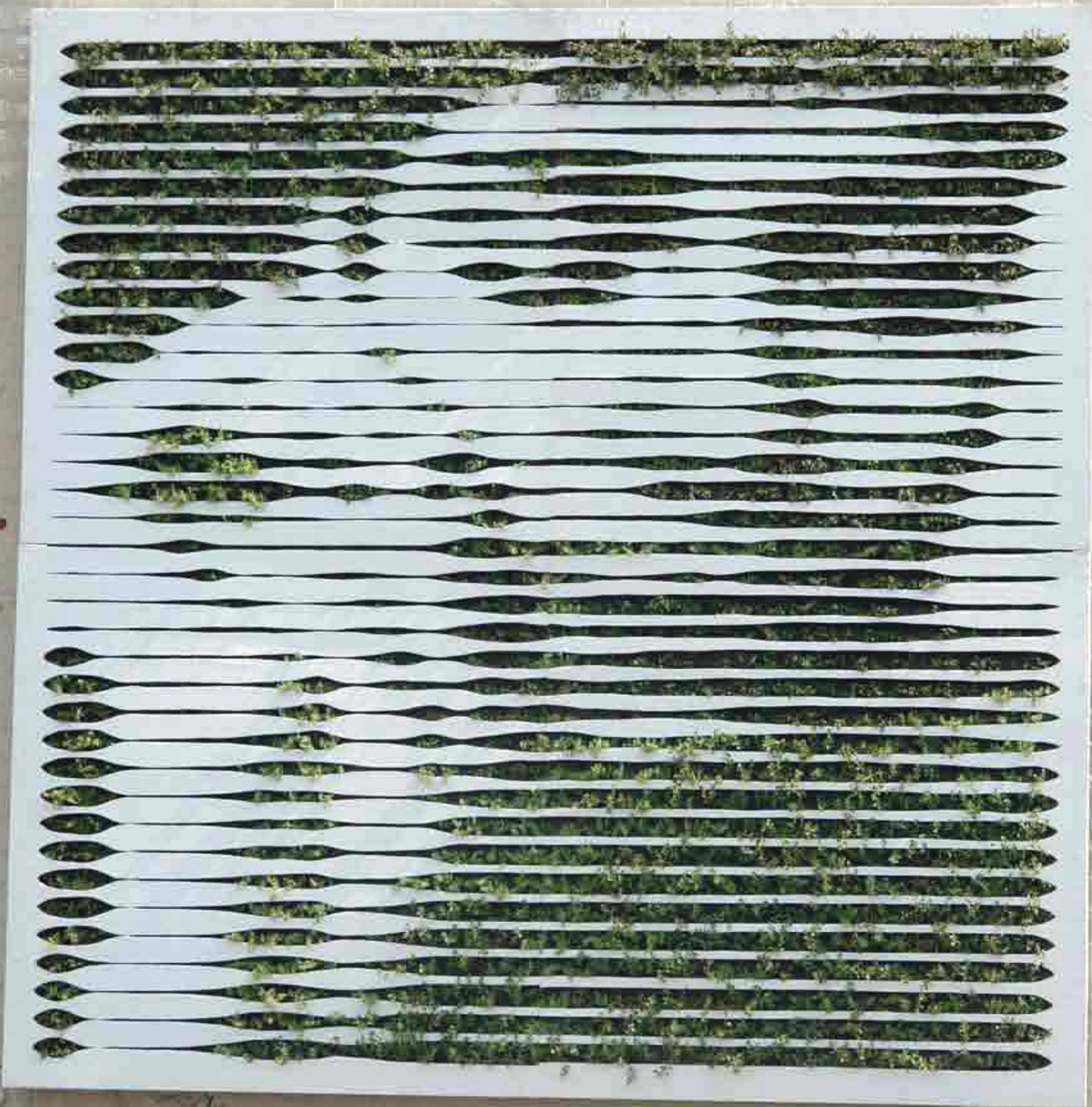




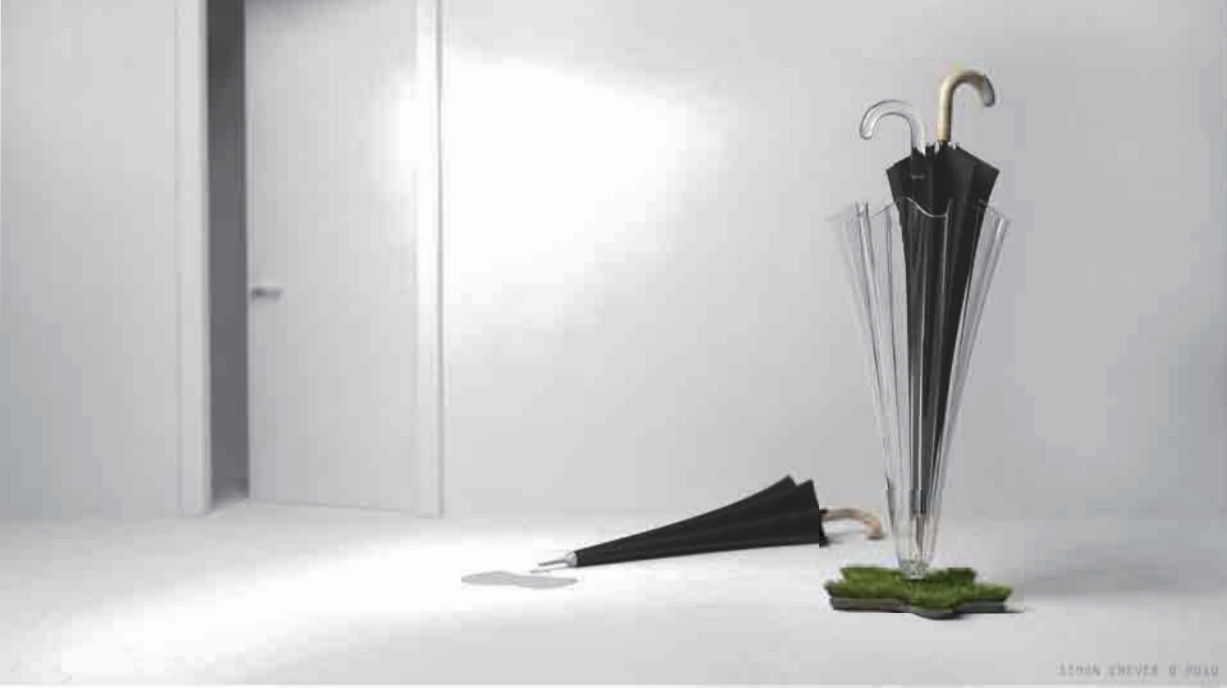




























Seedbomb is a non-military bomb that protects earth from worsening desertification and lessens sandstorms. After The 2nd world war, Gale Halvorson, an American pilot, dropped candies in the name of hope for children in berlin. The seedbomb is the bomb of hope like the candies of Gale Halvorson. When a Seedbomb is released from an airplane, Seedbomb is disassembled in the air and Seed capsules inside of the bomb spread out widely and fall on the ground.



Risk of  
Desertification

- Very high
- High
- Moderate



















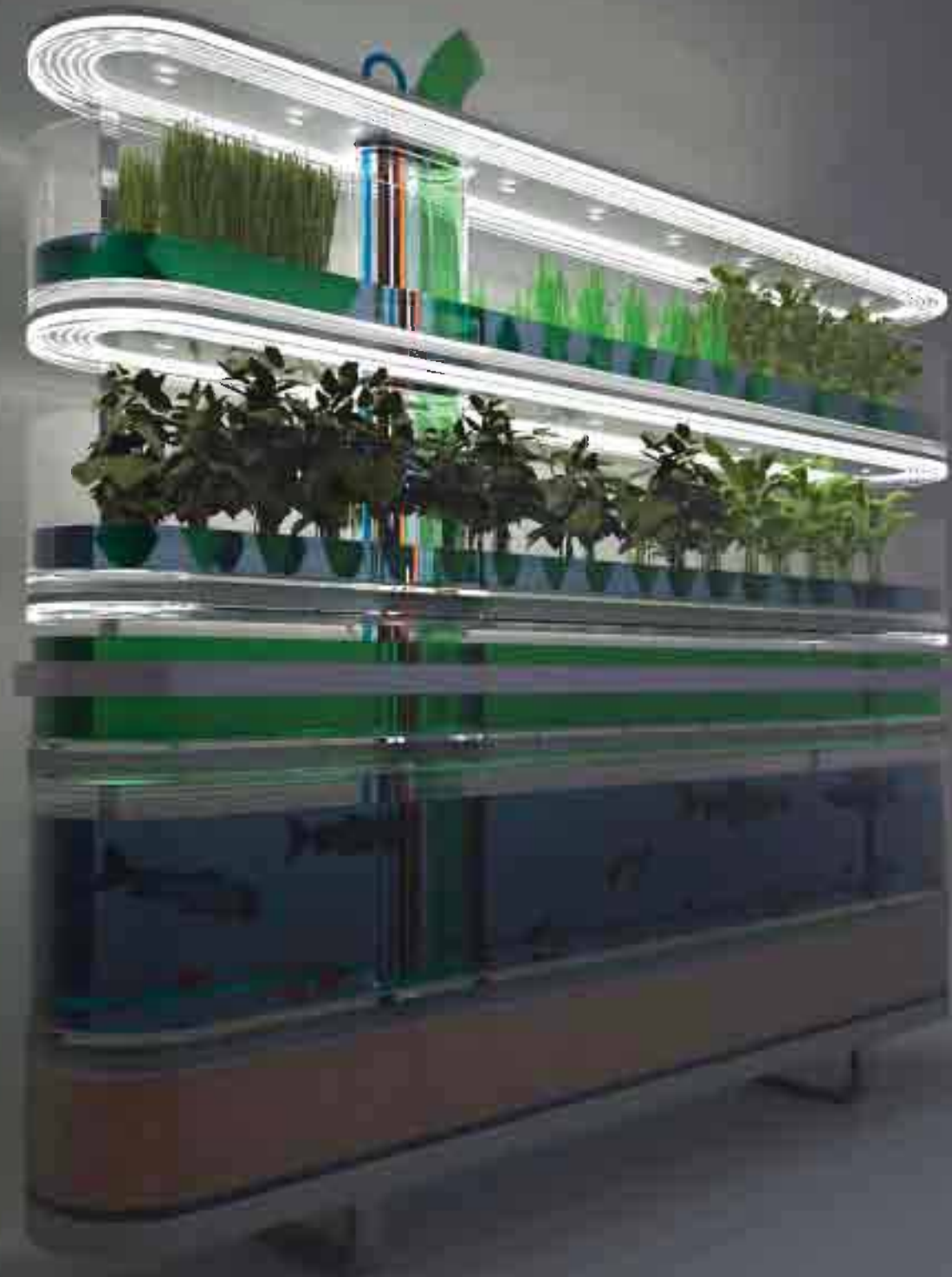
































































factory square small  $\times 2$  / factory square large  $\times 2$









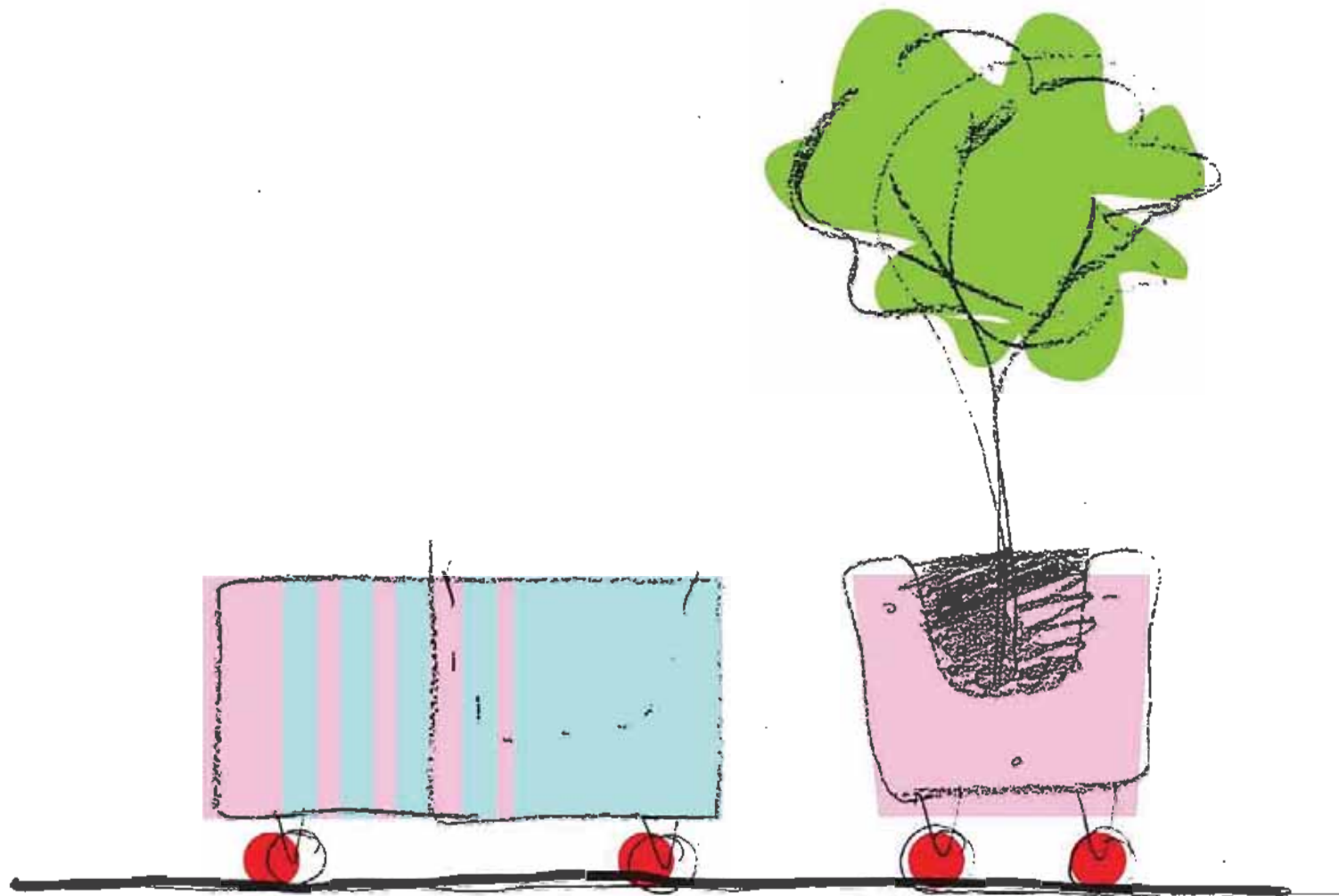






COMBO PLANCH

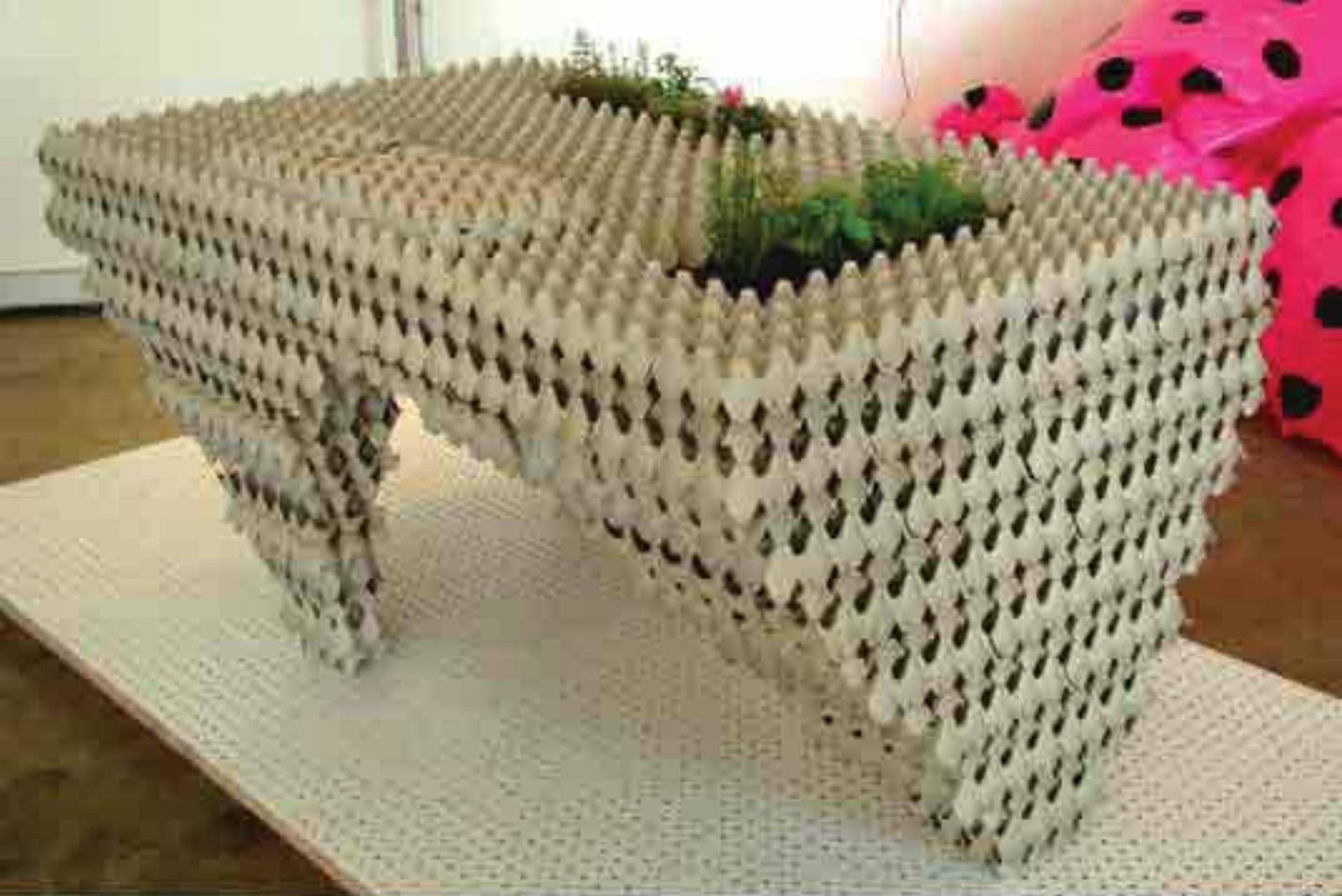




**AAA+A**

**MOSTRA ITINERANTE**

















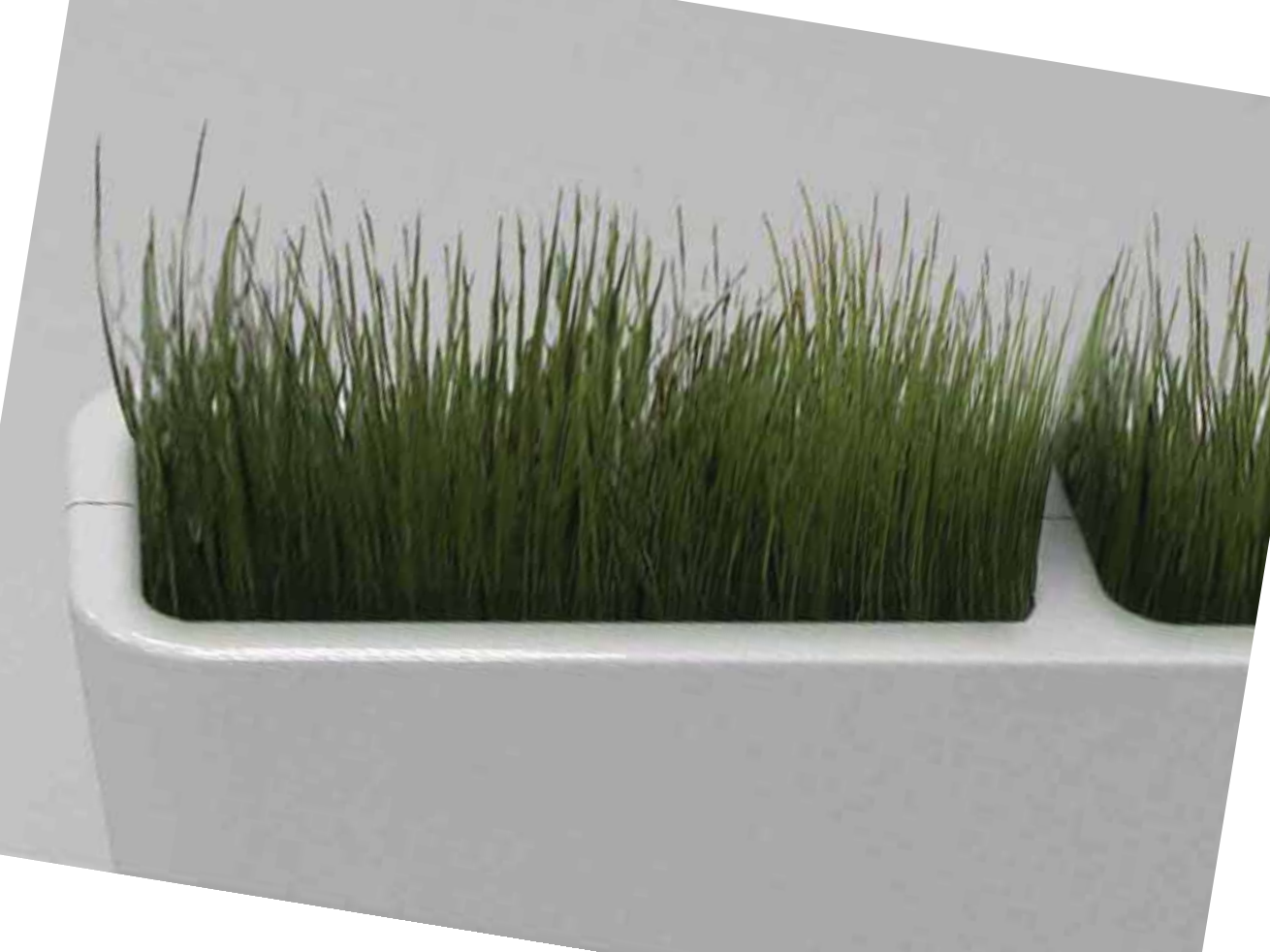


HOURS



MINUTES











2017  
*BrandtAION*





CUISSON

04:57  
10:23

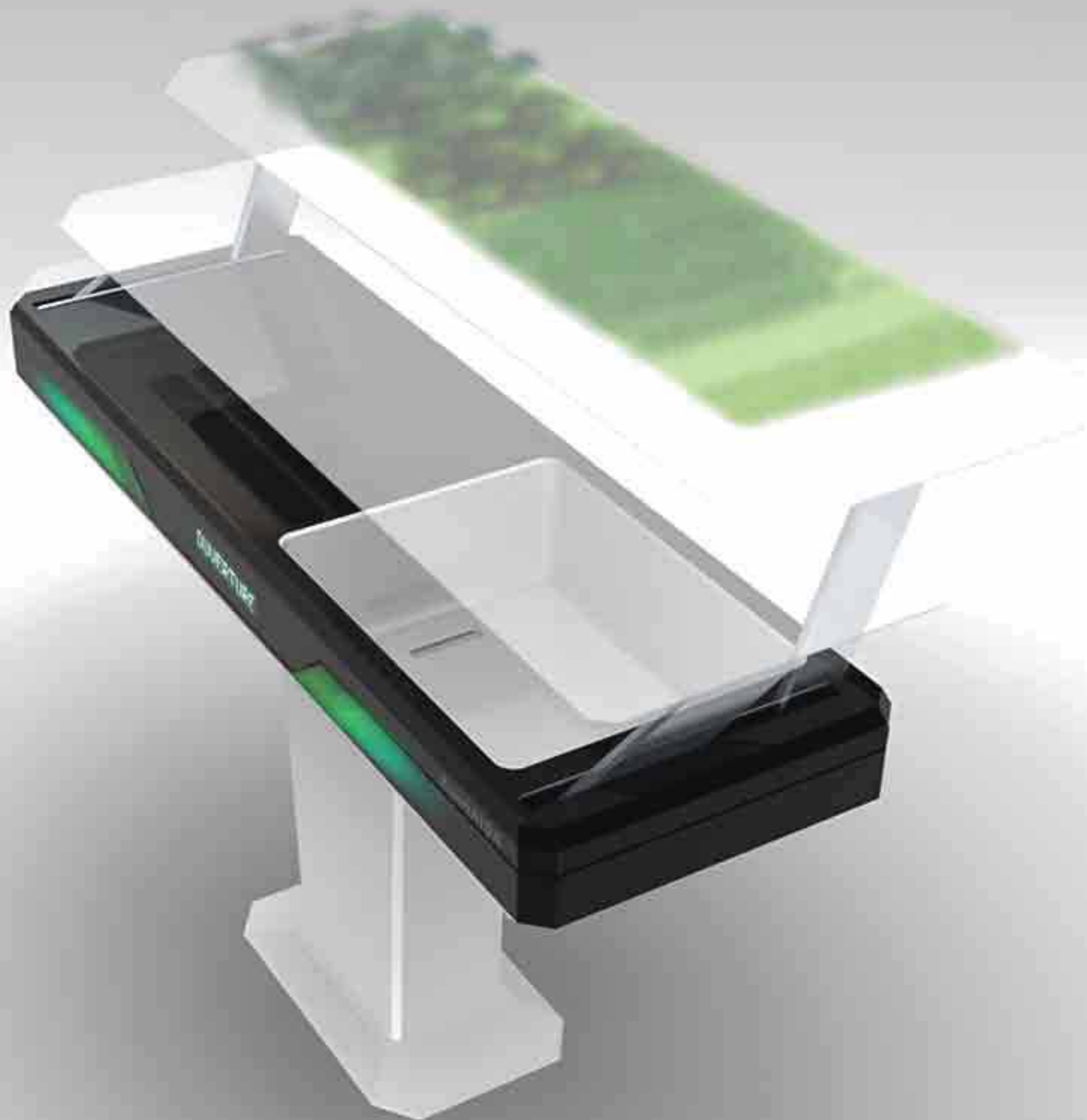














































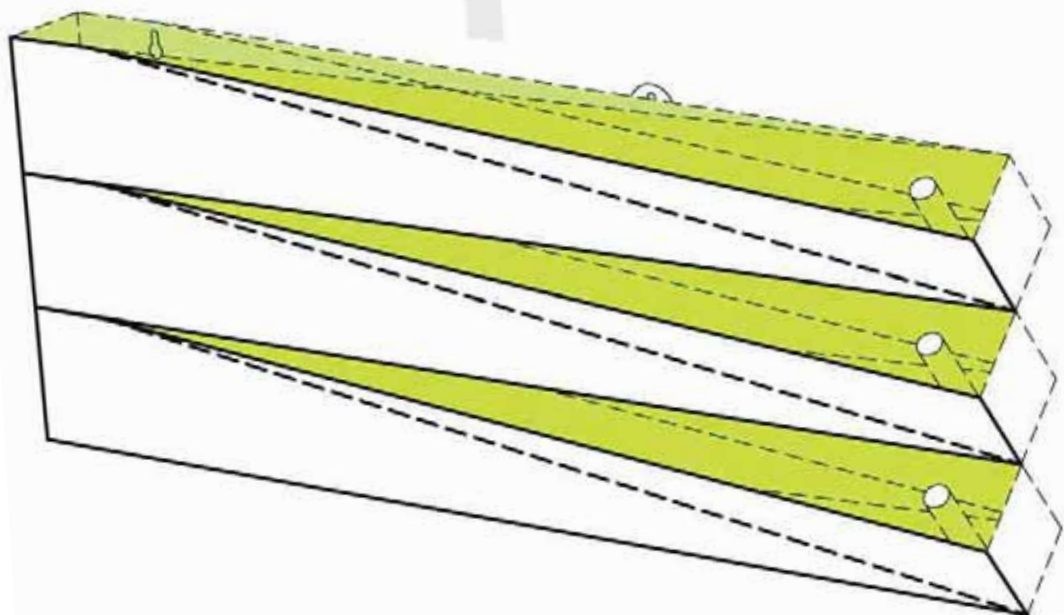
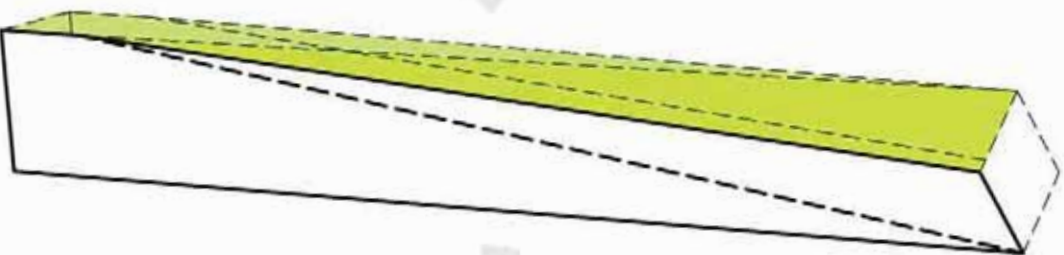
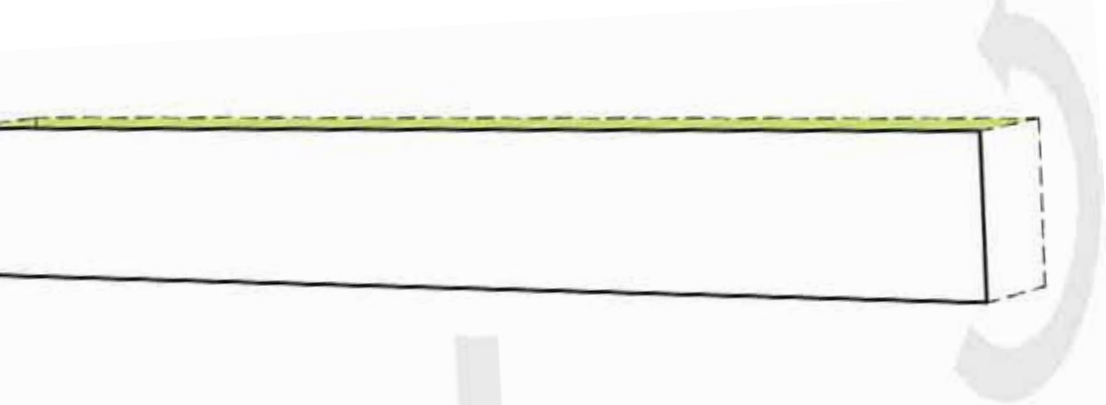






























1 Bacterial agents are released with the light.

2 Acceleration of the process on 3 floors.

3 A part of the fuel nourishes the plant.

4 The big part of the compost goes in the green container.











































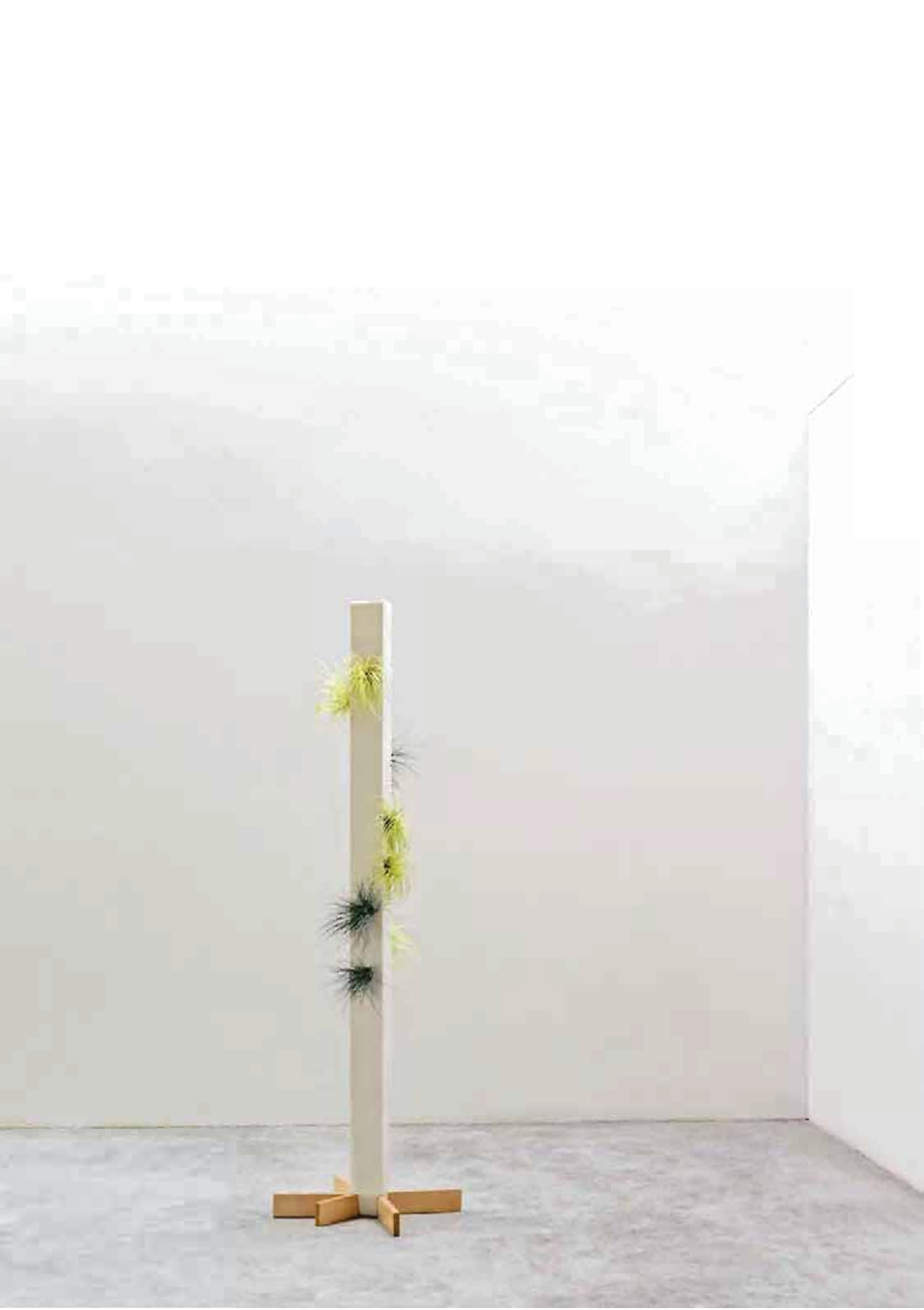
















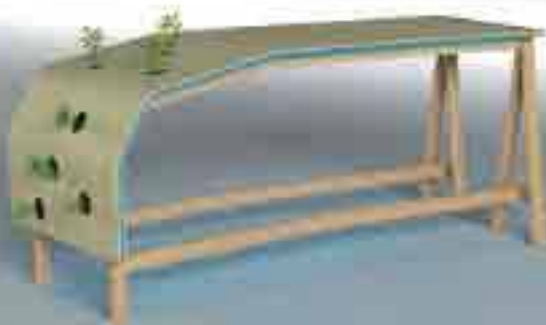
























# Introduction

1. Introduction

2. Materials

3. Procedure

4. Results

5. Discussion

6. Conclusion

7. References











(oxygen<sup>of</sup>  
green) Low Table



Tillandsias, also called Air plants



















mini



looper



zori



oval



circle



planet



bollard

divider



stool



caterpillar





























„STARTER“ OF THE PERIPATHETIC SHELTER.



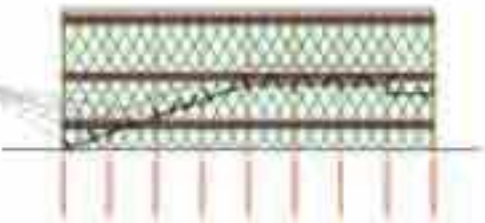
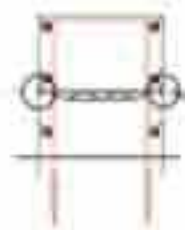
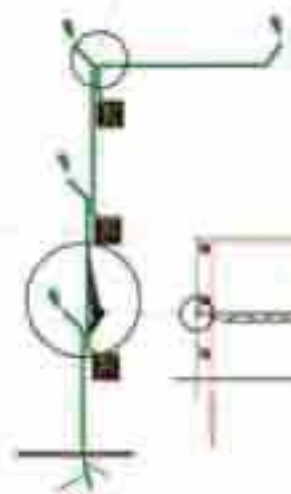
PERIPATHETIC SHELTER AFTER 10 YEARS OF NURTURING.



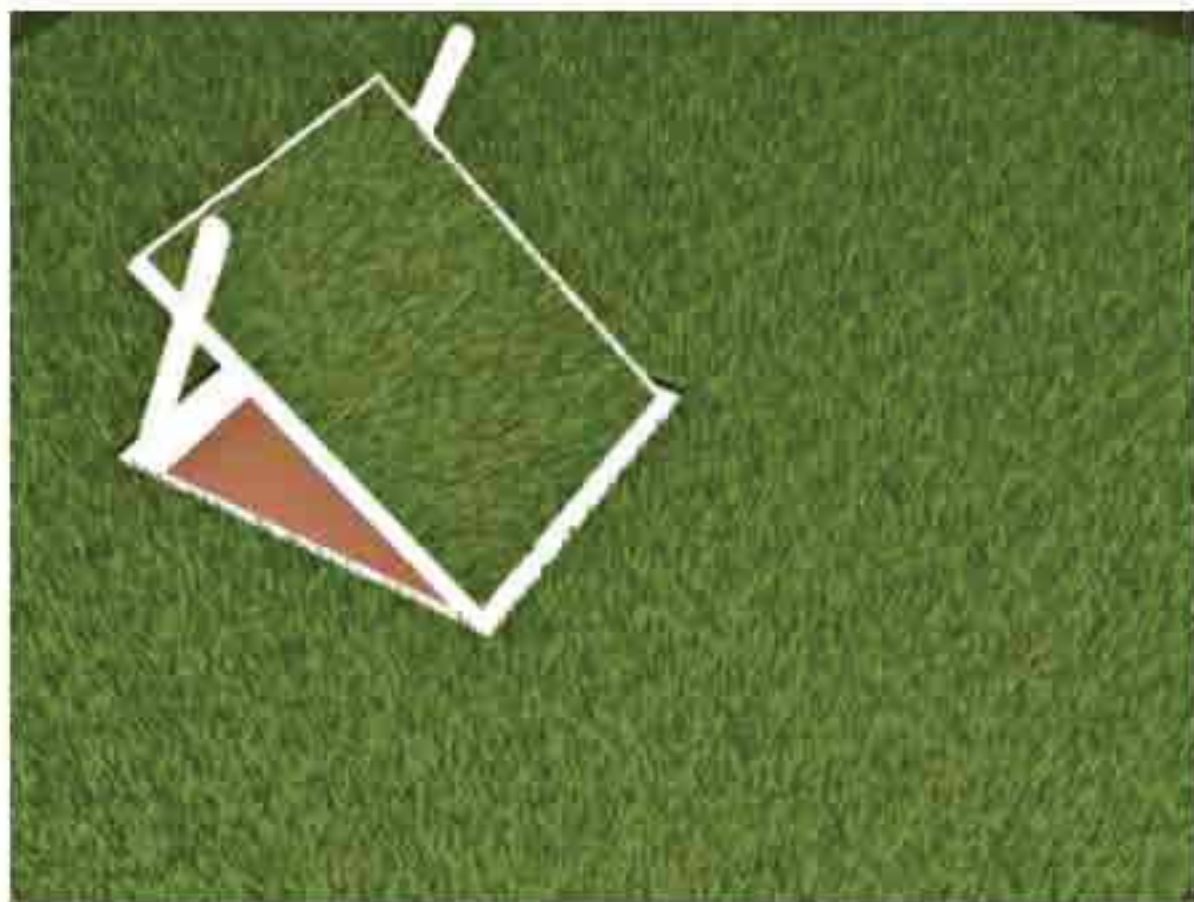
UP: PLOT STATION; DOWN: ADD. GROWTH IN 1 YEAR.



GRAFTED PLANTS. PLOT STATION BY FERNANDO LUDWIG.



„TREE CIRCUS“ BY AXEL BERLANDSON, CALIFORNIA (1940 - 1966)





























Gli uccelli fanno nidi dove vogliono, integrati nel paesaggio in modo naturale con i materiali disponibili. Ispirato dagli uccelli, House Nest è una semplice struttura in metallo e corde che può essere costruita con materiali naturali, bastoni, foglie ecc. Non occupa spazio perché è sospesa da una grossa corda. Una volta installata può essere usata come una piattaforma di osservazione o un ambiente essenziale in cui trascorrere la notte. Progettato per l'esposizione di Neorrural in theEgo Gallery a Barcellona e comprata dal Museo di Arte Contemporanea La Panera (Lleida).

*Birds make nests wherever they want to, they integrate into the landscape in a natural way using the closest available materials. Inspired by birds, House Nest is a simple structure*











































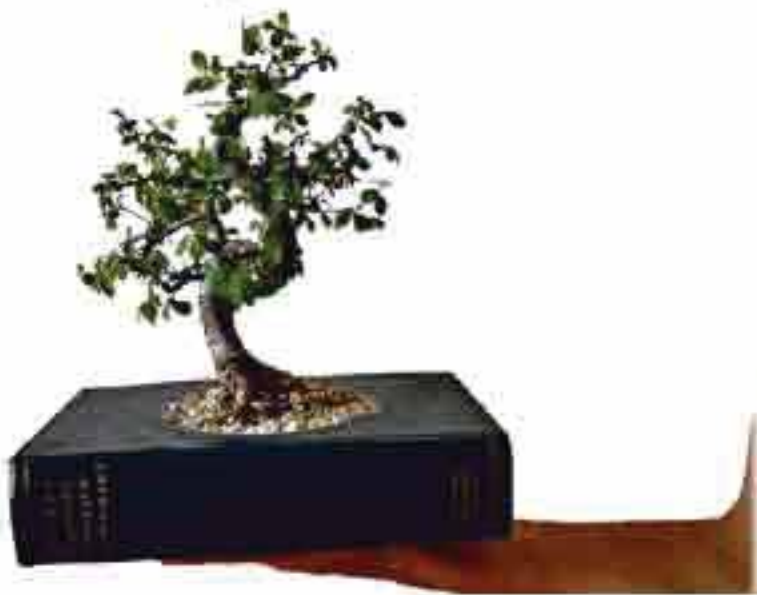












La natura crea alberi maestosi, mentre l'uo-













Questa serie di oggetti, ideata e immortalata dai fotografi Arbet e Egry, offre un interessante spunto per il riutilizzo di vecchi oggetti in disuso. Pur non essendo funzionali, queste idee sono molto interessanti per quanto riguarda il rapporto tra la natura e la nuova valorizzazione di oggetti che sarebbero diventati spazzatura.













































I miei gioielli si chiamano Plant a Porter, sono  
eseguiti con materiale riciclato, sughero e pic































